



# WHAT CAN CROYDON LEARN FROM COVID 19.

DR. NNENNA OSUJI

CONSULTANT HAEMATOLOGIST

MEDICAL DIRECTOR

DEPUTY CHIEF EXECUTIVE

---

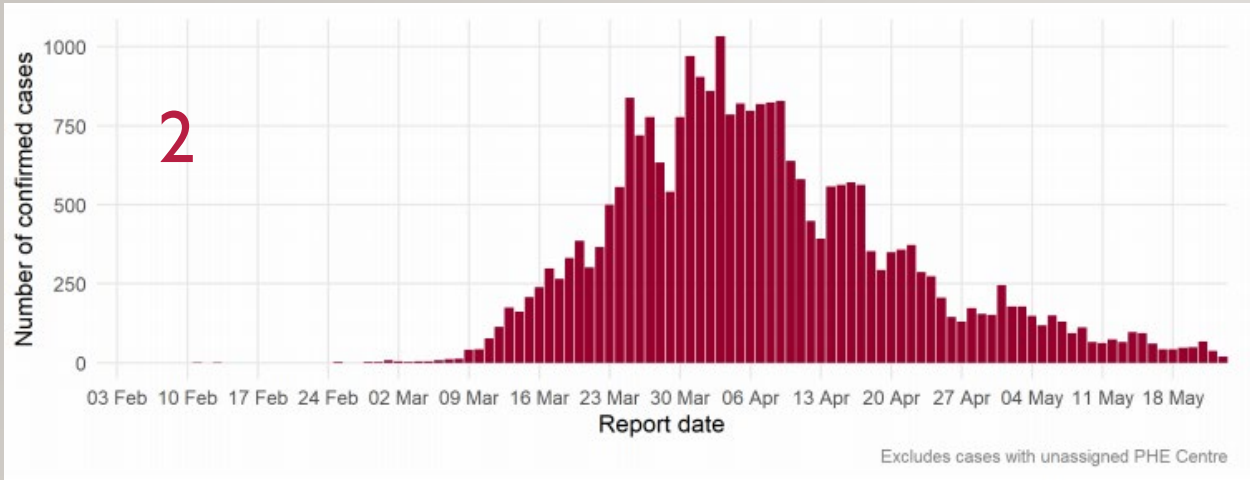
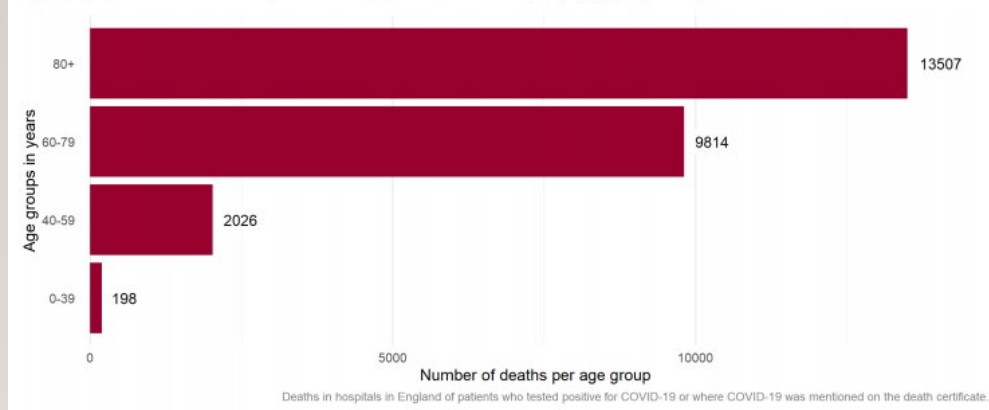


Figure 3: Laboratory-confirmed COVID-19 cases in London by local authority and report date



- The peak of COVID-19 has passed. It is unclear if/when a second peak may occur
- Croydon has had a high and early peak from COVID-19
- We recognise the impact of age on deaths from COVID-19

Figure 10: Cumulative laboratory-confirmed COVID-19 deaths by day age group in England



A professional office desk setup. In the foreground, a pair of glasses rests on a stack of papers. To the left, a black and white mug is visible. A laptop is open in the background, and the scene is softly lit with bokeh light effects. The word "PROFESSIONAL" is overlaid in white, bold, sans-serif font across the middle of the image.

PROFESSIONAL



# PROFESSIONAL

---

- Learning
- Innovation
- Resilience
- Hidden injury



# Croydon University Hospital was one of the hardest hit in the first wave of COVID-19

- **1,312** COVID positive patients cared for since 11 March
- **1,009** successfully treated and discharged
- **303** patients have sadly lost their lives

## Success

100 days in our care

## Post COVID care

Two of our ter 100 days in our care



Croydon Health Services  
NHS Trust



## Health Inequalities

COVID has uncovered previous healthcare burden

Local Community have many health care needs



Latest data shows CHS as one of London's leading trusts for planned care recovery

(9<sup>th</sup> November 2020)

Rank	Provider	4 Wk rolling	Prior week	Change
1	Croydon	100.4%	100.7%	▼
2	Royal Marsden	95.5%	88.4%	▲
3	Homerton	95.4%	99.9%	▼
4	BHRUT	90.5%	83.2%	▲
5	GOSH	90.2%	92.9%	▼
6	Kingston	90.1%	84.2%	▲
7	RFL	89.5%	84.1%	▲
8	Epsom	88.6%	88.0%	▲
9	Whittington	88.1%	85.8%	▲
10	GSTT	85.0%	83.5%	▲





POPULATION

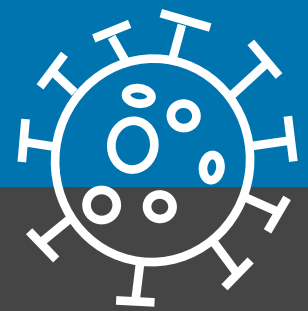
# POPULATION

---

- Data
- Disparity
- Decisions



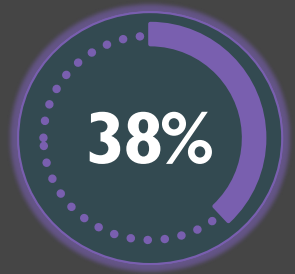
# SWL COVID-19 Survival



**Influenza & Pneumonia** is also a most significant factor amongst patients who survive. The most common underlying health conditions in those dying feature to a much lesser degree in those who survive.



**2498\***  
 Patients  
 admitted



Patients with pre-existing conditions compared to national avg of **23%**



**6.9** out of 10 people survived COVID-19. A total of **1718** patients recovered



## Primary Care Recorded Conditions



**16%** of patients had existing Hypertension



**6%** of patients had existing Respiratory Disease



**13%** of patients had existing diabetes



**8%** of patients had existing Heart Conditions

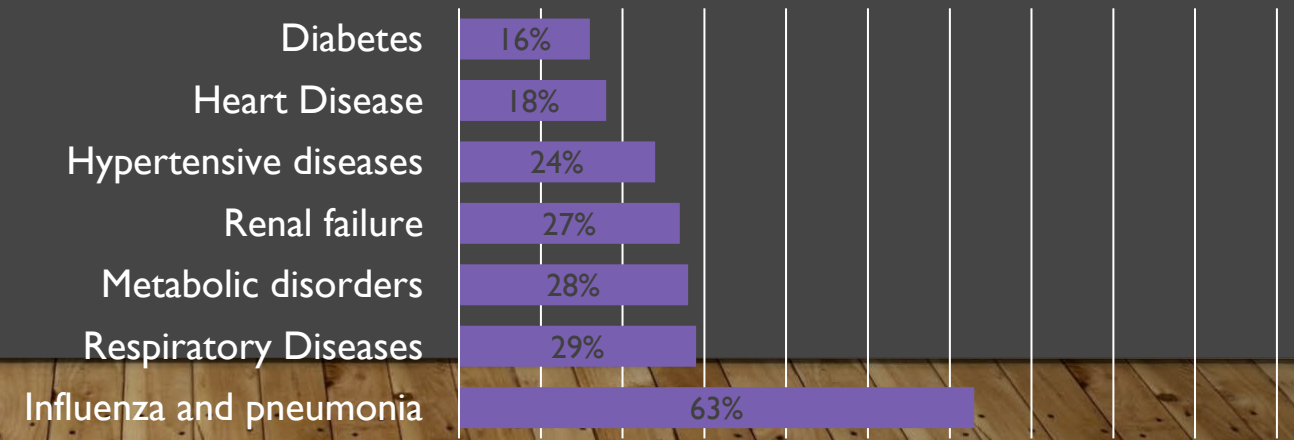


**8%** of patients had existing Renal conditions



**62%** of patients surviving had none of the main QOF conditions

## Admitted Secondary Care Conditions



\*Figures based on SUS for March to May 2020.

# 3.All Ethnicities - Covid Deaths



## COVID-19 inequality review - South West London Patients - Acute Providers

No. of Patients  
**246**

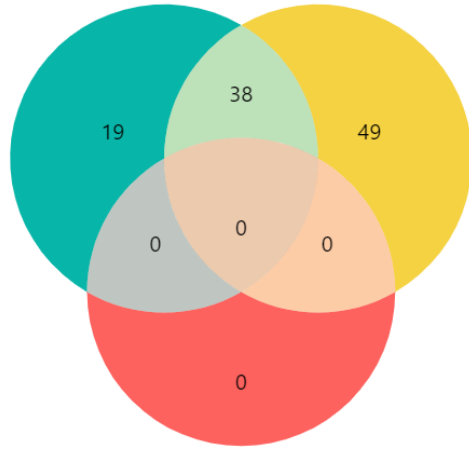
Patient Cohort filter:

Acute Deaths (Confirmed)

### Acute Patients by LTC

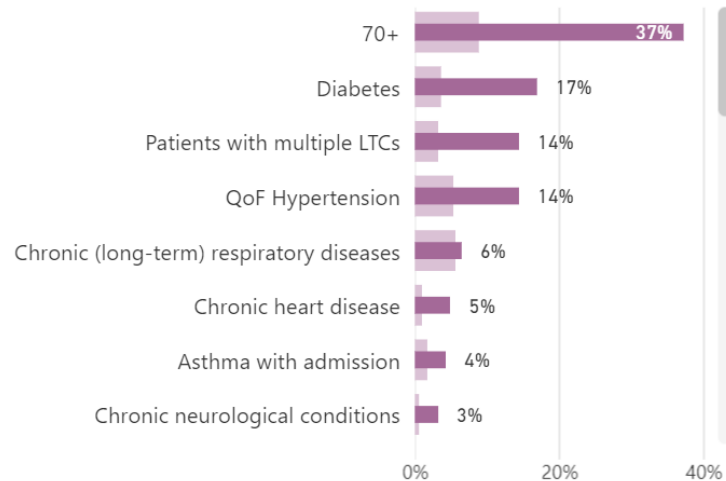
Legend

- QOF\_Diabetes: 57 (23%)
- QOF\_Hypertension: 87 (35%)
- Chronic (long-term) re...: 0 (0%)



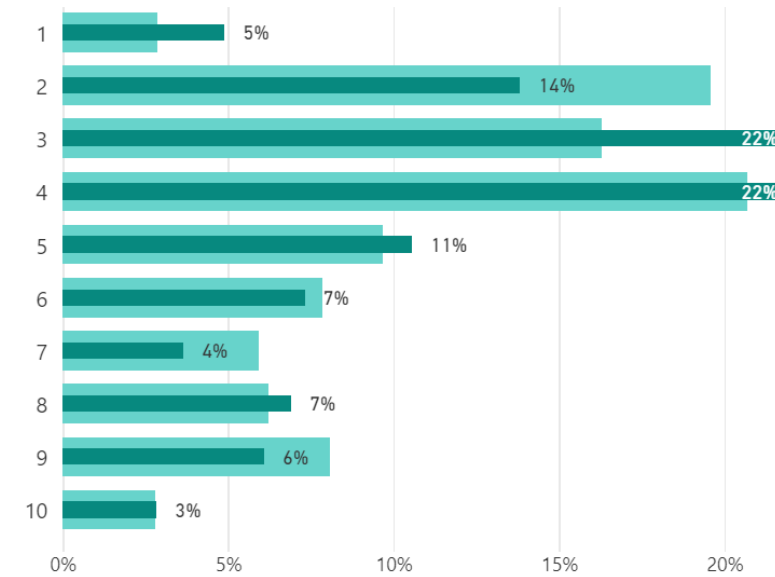
### Locally Identified Conditions

● Acute Covid Profile ● SWL Population Profile



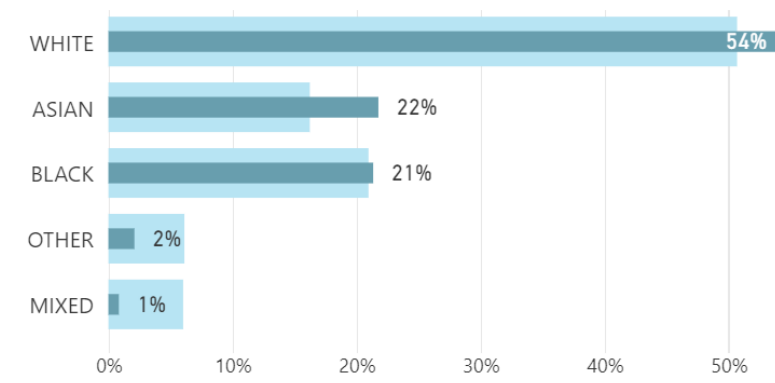
### Deprivation decile (1 = most deprived, 10 = most affluent)

● Acute Covid Profile ● SWL Population Profile



### Ethnicity profile (where known)

● Acute Covid Profile ● SWL Population Profile



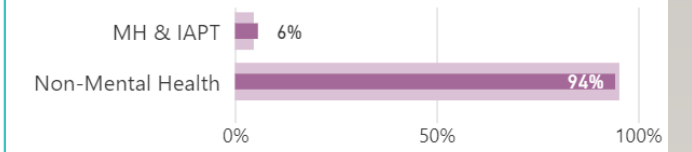
### Patients accessing Community

● Acute Covid Profile ● SWL Population Profile



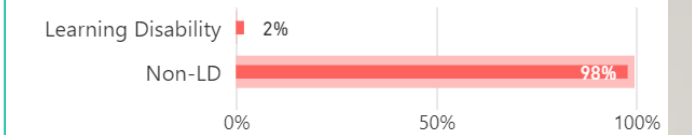
### Patients accessing Mental Health / IAPT

● Acute Covid Profile ● SWL Population Profile



### Learning Disability (QOF)

● Acute Covid Profile ● SWL Population Profile

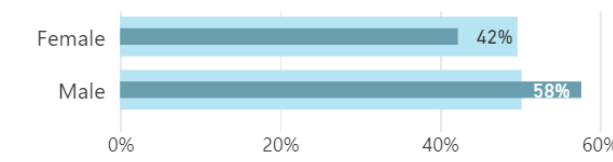


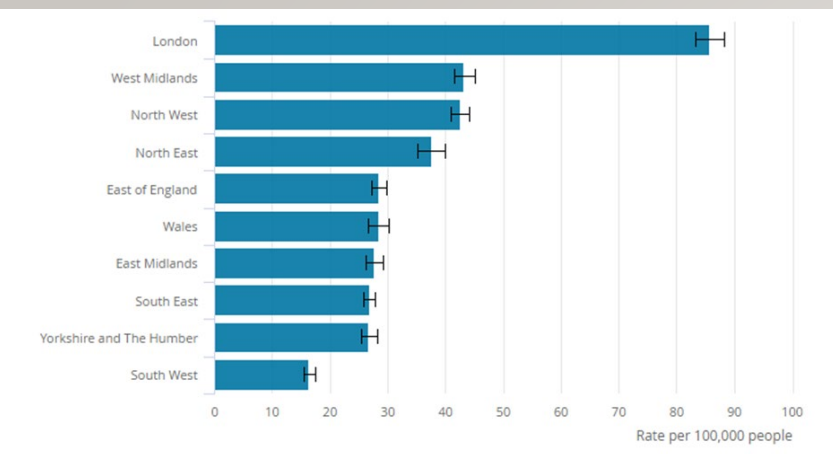
### Likelihood of covid admission, multiplied

4.83 Community    1.28 MH/IAPT    4.54 Learning Disability

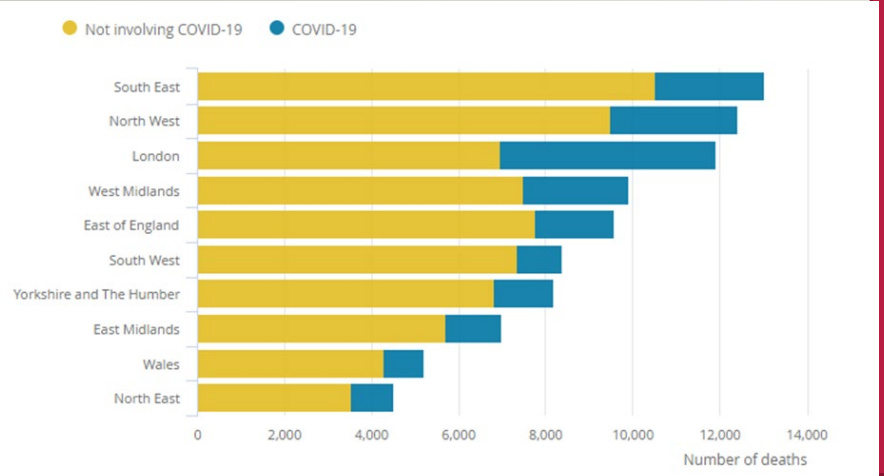
### Gender

● Acute Covid Profile ● SWL Population Profile



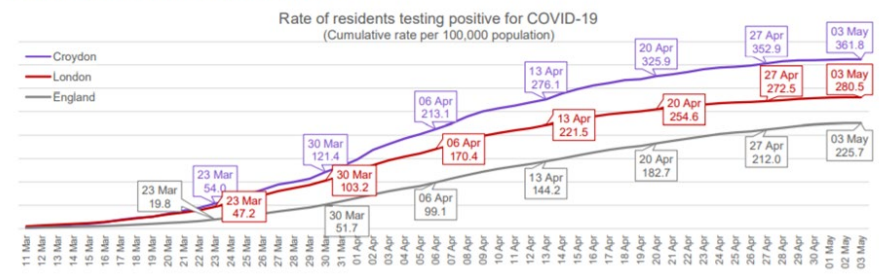


Source: Office for National Statistics - Deaths involving COVID-19



Source: Office for National Statistics - Deaths involving COVID-19

Croydon has a higher rate of confirmed cases than seen across London and England. At the latest date, Croydon had the highest number and fourth highest rate of confirmed cases in London.



### What we know

Incidence for COVID 19 is highest in London

Croydon within SWL has had an earlier and more significant peak with significant deaths.

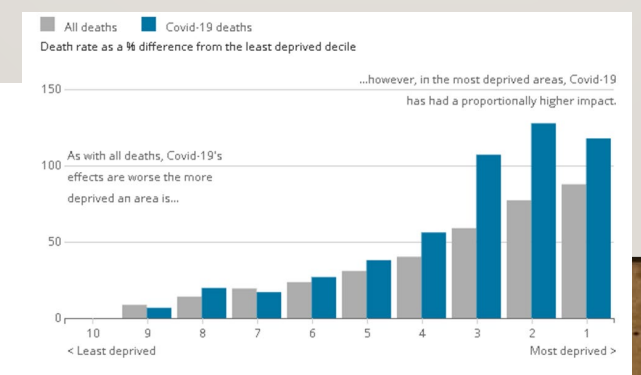
Age adjusted Mortality from COVID 19 is highest in London

HCW visual differences in those impacted – employment status is relevant.

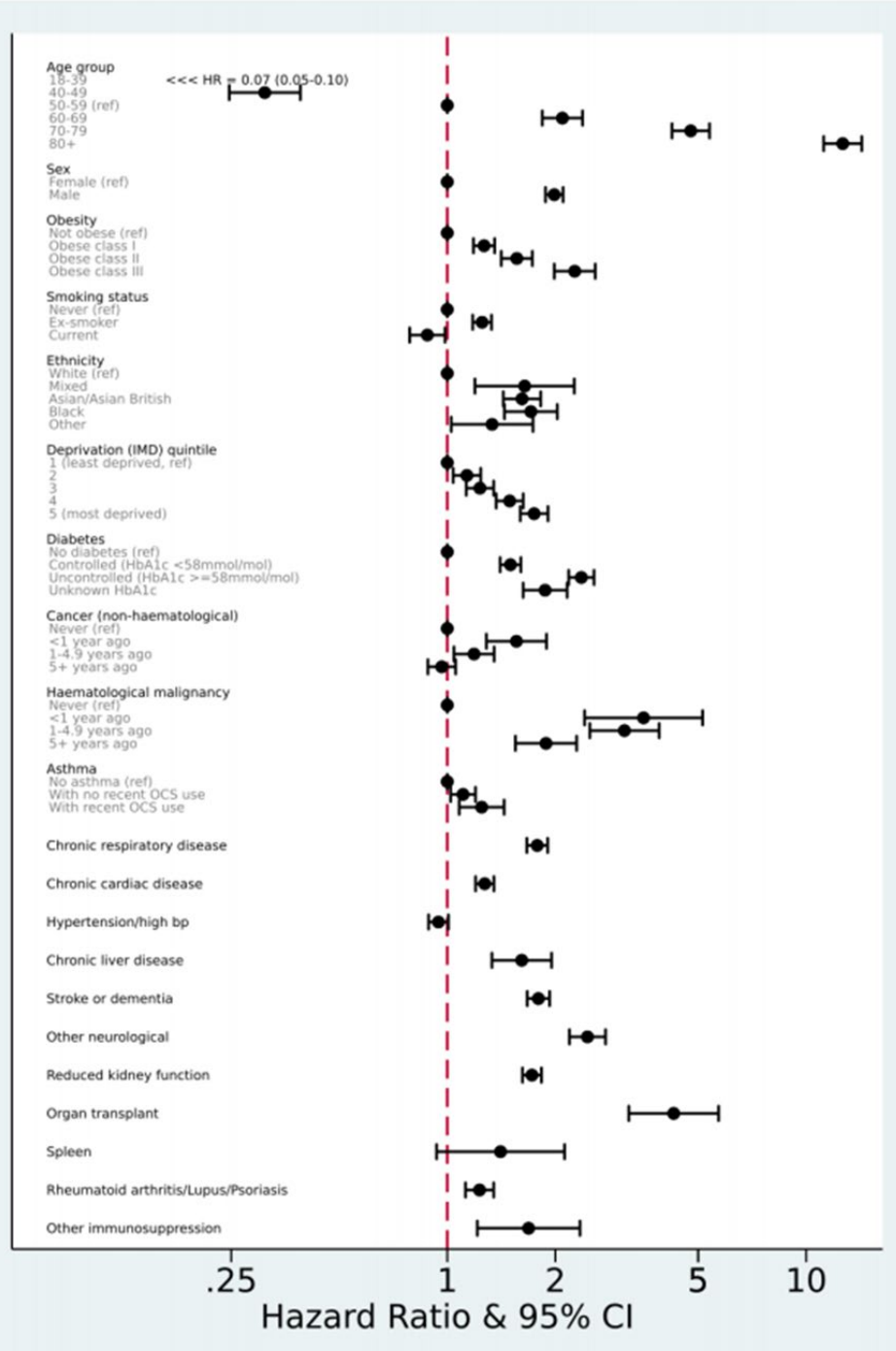
Statistically significant risk factors identified include age, gender, obesity, immune suppression, deprivation, ethnicity.

People are scared! Data has been initially scarce, un-peer reviewed, variable in inclusion criteria.

Most helpful and useful study is OpenSafely collaboration but 26% unknown ethnicity and only 17% London practices on the base system



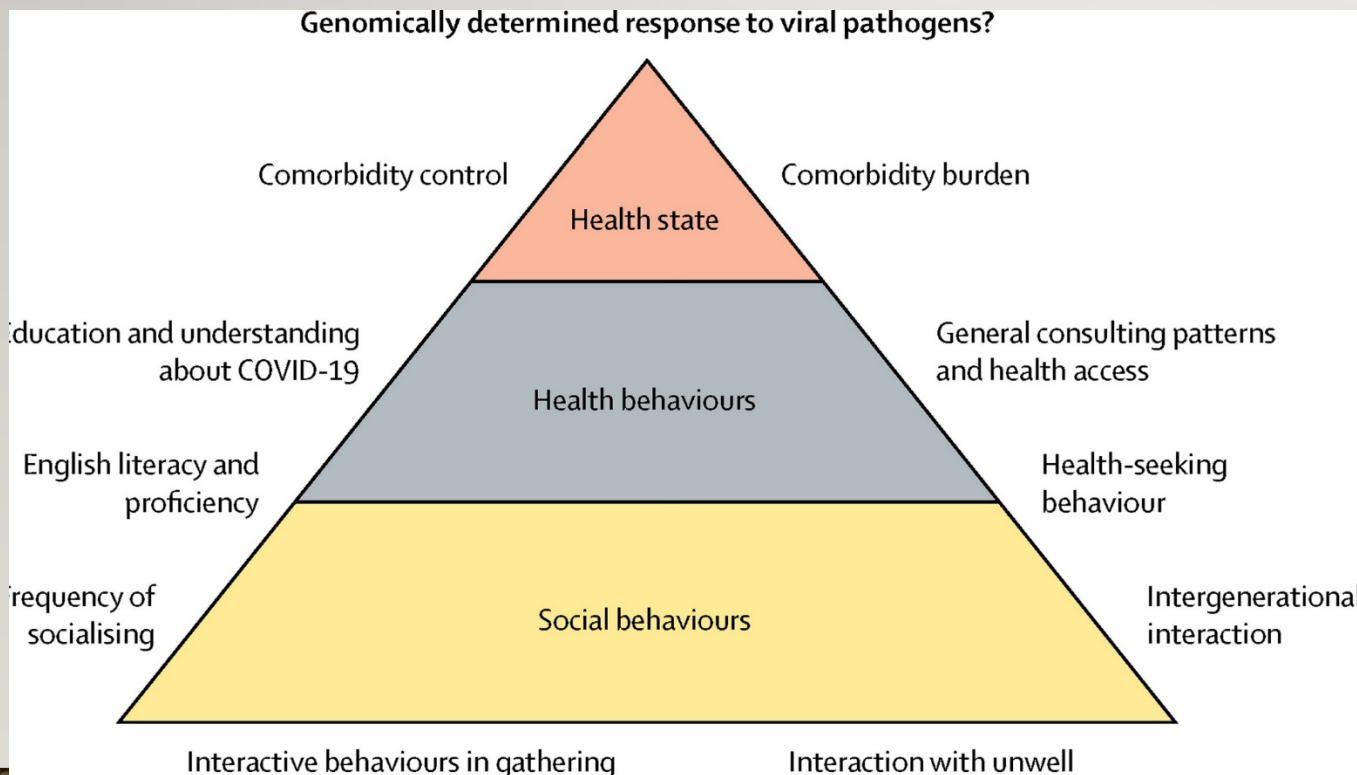
Source: Office for National Statistics - Deaths involving COVID-19



Source: Office for National Statistics - Deaths involving COVID-19

But.....

1. There is a risk in oversimplifying ethnicity as a construct
2. Aggregate groupings obscure important differences within individual categories
3. Data completeness is low and/or limited to descriptions based on visible differences
4. Assumptions that COVID is acquired within a health care setting
5. Appropriate statistical analysis as proportion of background population



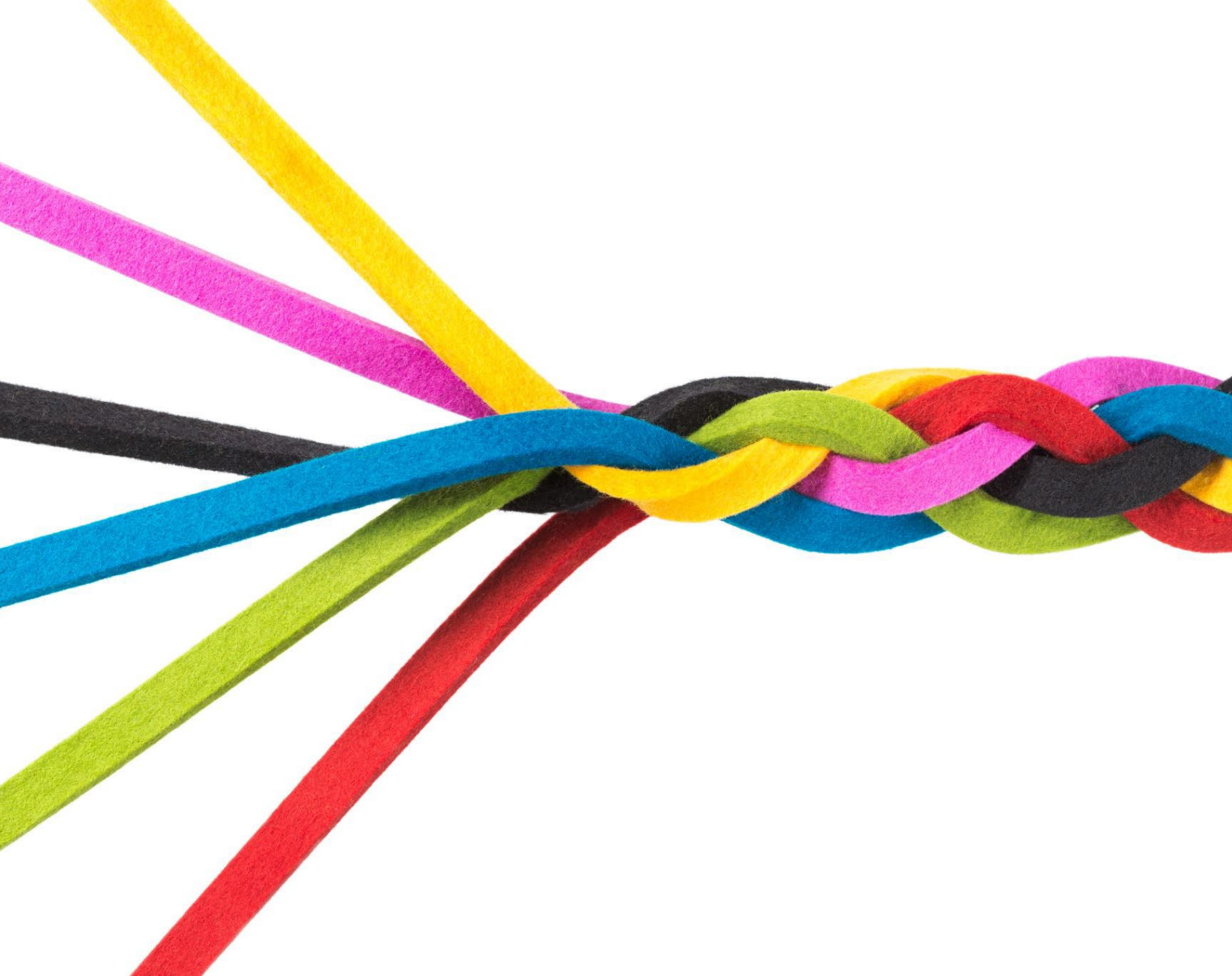
Genetics



Geography



Sociology



---

PERSONAL



# PERSONAL

---

- Watershed
  - What's important, what matters
  - Celebrate and value staff
  - Connections
  - Communication
  - Kindness
  - Pain and Joy
  - Growth
  - .....hunger

